

Figure 2-3
New Preferred Alternative
 VICINITY MAP




Los Padres National Forest

Oil and Gas Leasing Analysis




JUNE 2005

LEGEND

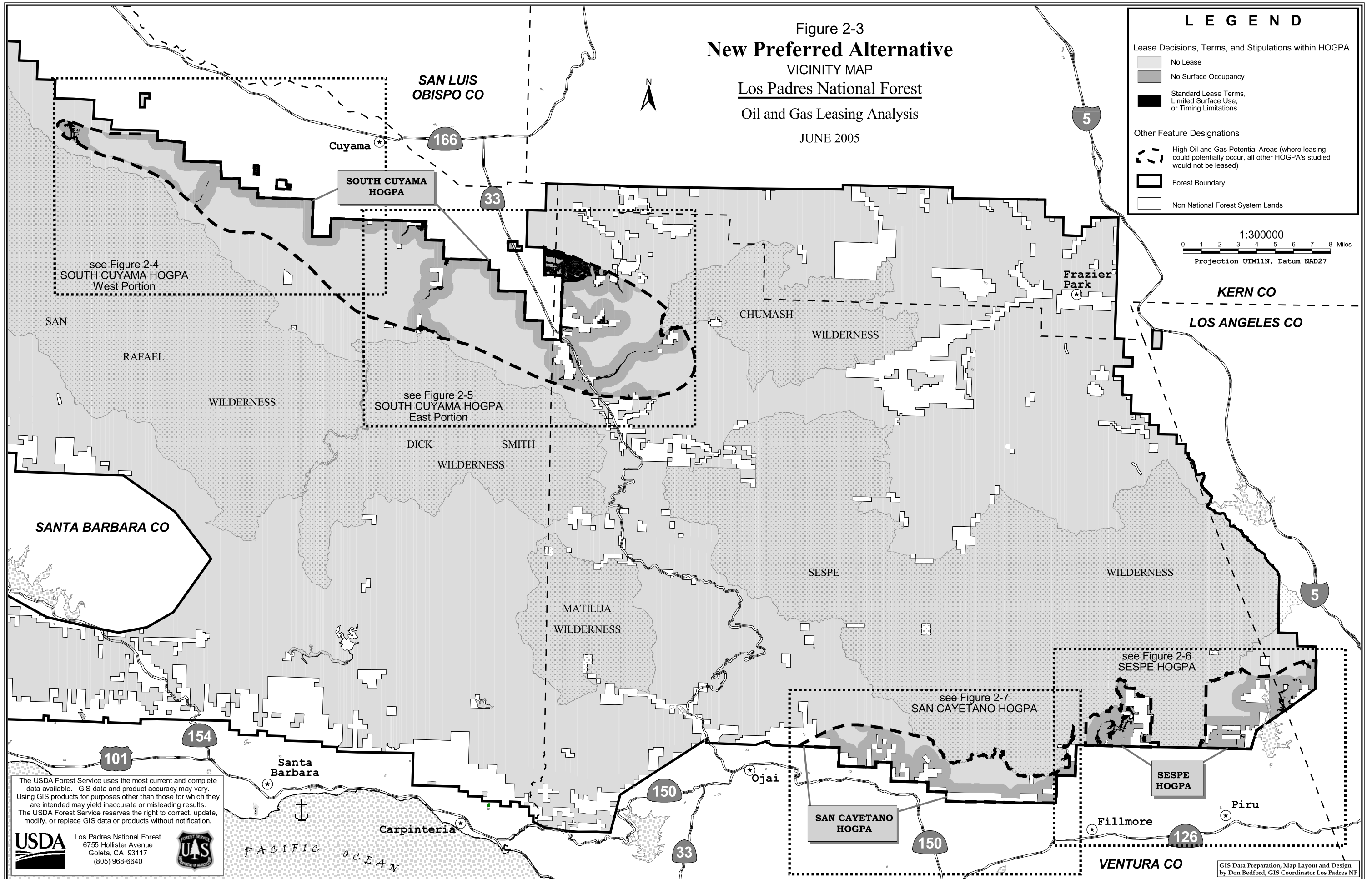
Lease Decisions, Terms, and Stipulations within HOGPA

-  No Lease
-  No Surface Occupancy
-  Standard Lease Terms, Limited Surface Use, or Timing Limitations

Other Feature Designations

-  High Oil and Gas Potential Areas (where leasing could potentially occur, all other HOGPA's studied would not be leased)
-  Forest Boundary
-  Non National Forest System Lands

1:300000
 0 1 2 3 4 5 6 7 8 Miles
 Projection UTM11N, Datum NAD27



see Figure 2-4
 SOUTH CUYAMA HOGPA
 West Portion

see Figure 2-5
 SOUTH CUYAMA HOGPA
 East Portion

see Figure 2-7
 SAN CAYETANO HOGPA

see Figure 2-6
 SESPE HOGPA

The USDA Forest Service uses the most current and complete data available. GIS data and product accuracy may vary. Using GIS products for purposes other than those for which they are intended may yield inaccurate or misleading results. The USDA Forest Service reserves the right to correct, update, modify, or replace GIS data or products without notification.

USDA Los Padres National Forest
 6755 Hollister Avenue
 Goleta, CA 93117
 (805) 968-6640



GIS Data Preparation, Map Layout and Design
 by Don Bedford, GIS Coordinator Los Padres NF