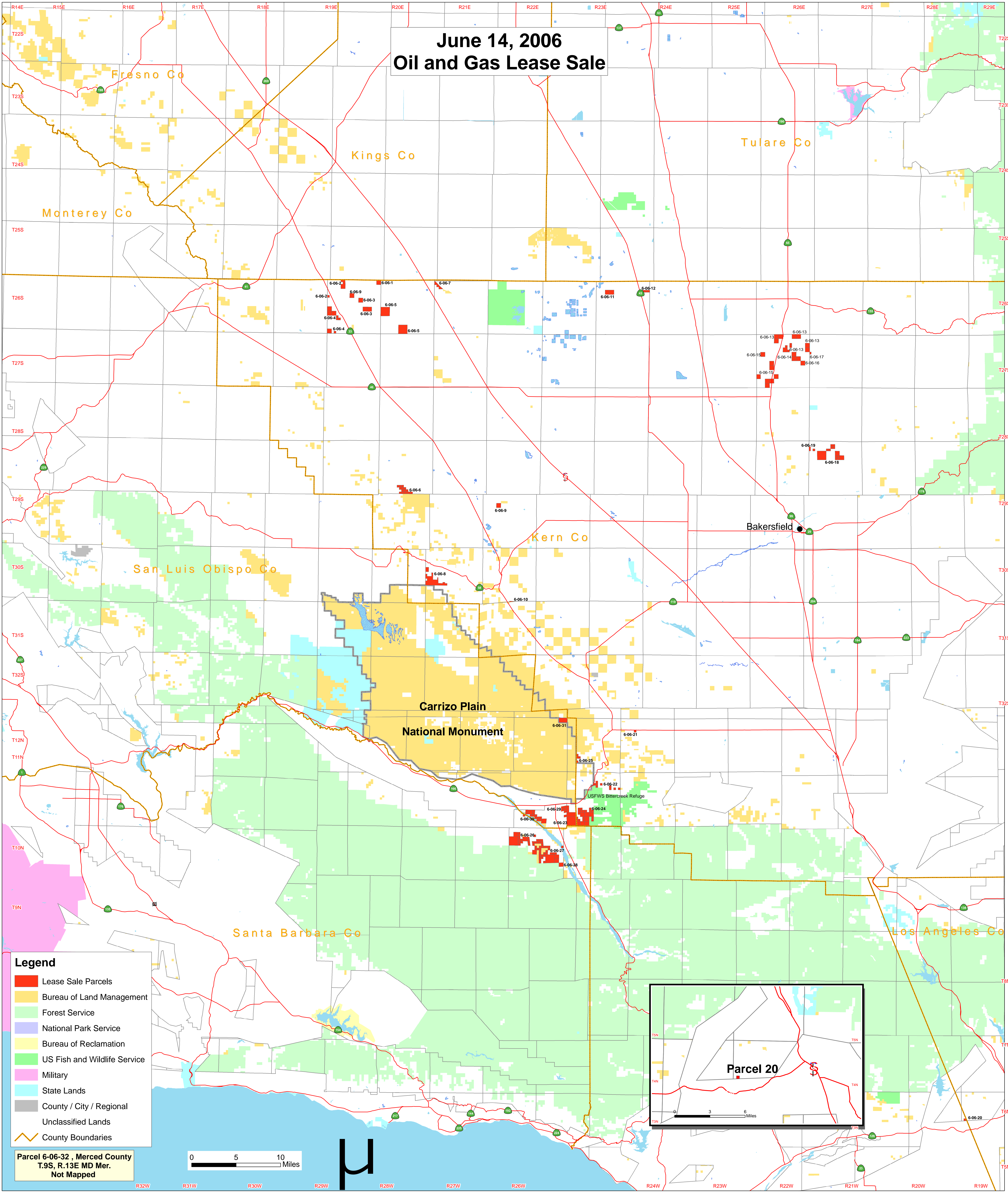


# June 14, 2006 Oil and Gas Lease Sale



- Legend**
- Lease Sale Parcels
  - Bureau of Land Management
  - Forest Service
  - National Park Service
  - Bureau of Reclamation
  - US Fish and Wildlife Service
  - Military
  - State Lands
  - County / City / Regional
  - Unclassified Lands
  - County Boundaries

Parcel 6-06-32, Merced County  
T.9S, R.13E MD Mer.  
Not Mapped

0 5 10  
Miles

